

**ECO-FRIENDLY STONE TILES HEADLINE
STUNNING NEW MURAL, ACCENT CHOICES**

San Diego – StoneImpressions has launched its largest release ever of new products and choices for creating stunning murals, accents and listellos. Like other signature StoneImpressions products, the tiles are created using an exclusive artist-developed process to hand print almost unlimited designs on stone.

A quick overview:

ECO-FRIENDLY STONE TILES

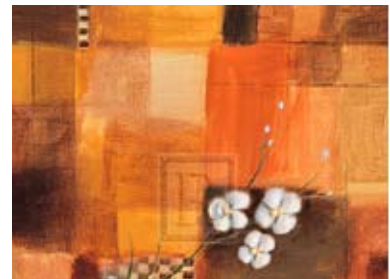
An exclusive new line of environmentally friendly accent, mural and border tiles express the warm beauty and texture of natural stone but are made of an advanced composite using recycled materials. The sustainable tiles feature rich colors and a texture palette similar to travertine and limestone.



Adding eye-catching appeal is a distinctive new line of trim and accent pieces made of recycled aluminum, brass, glass and reclaimed wood.

WORLD-REOWNED IMAGE COLLECTION

An industry-leading choice of images to create murals, accents and listellos grows much larger with the launch of a Designer Program, adding over 3,000 images from the world-renowned Rosenstiel's fine art and engravings collection.



MODERN COLLECTION

Choices for the kitchen, bath and beyond grow more eclectic and contemporary with a new Modern collection, ensuring designers and homeowners can find the right style for any look.



*Interviews with StoneImpressions founder Melinda Earl
available upon request.*